

APARTMENT-HAUS
Kirchengasse 9
3512 Mautern / Donau

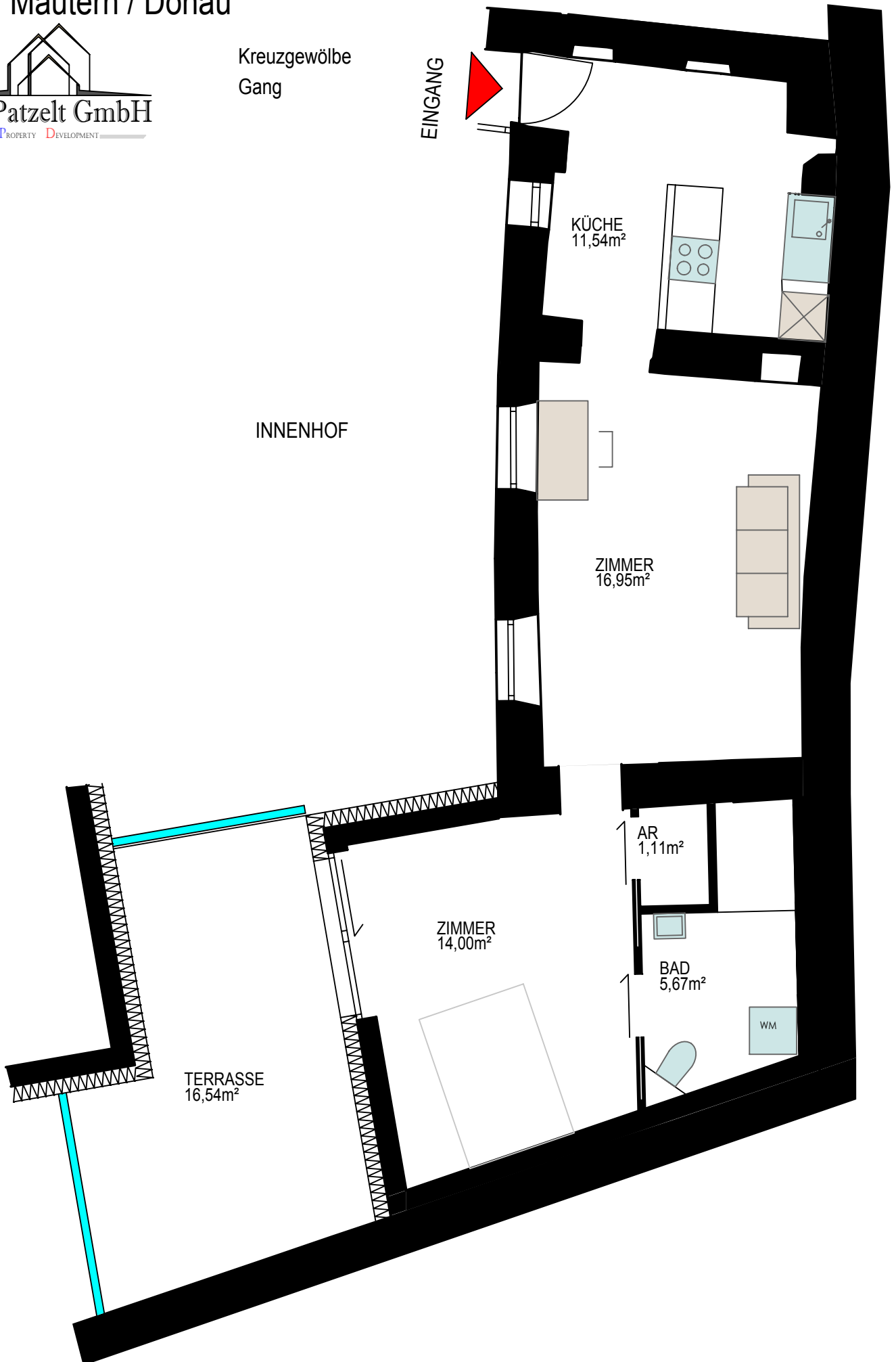
TOP 9



Kreuzgewölbe
Gang

EINGANG

INNENHOF



KÜCHE
11,54m²

ZIMMER
16,95m²

AR
1,11m²

BAD
5,67m²

WM

ZIMMER
14,00m²

TERRASSE
16,54m²